

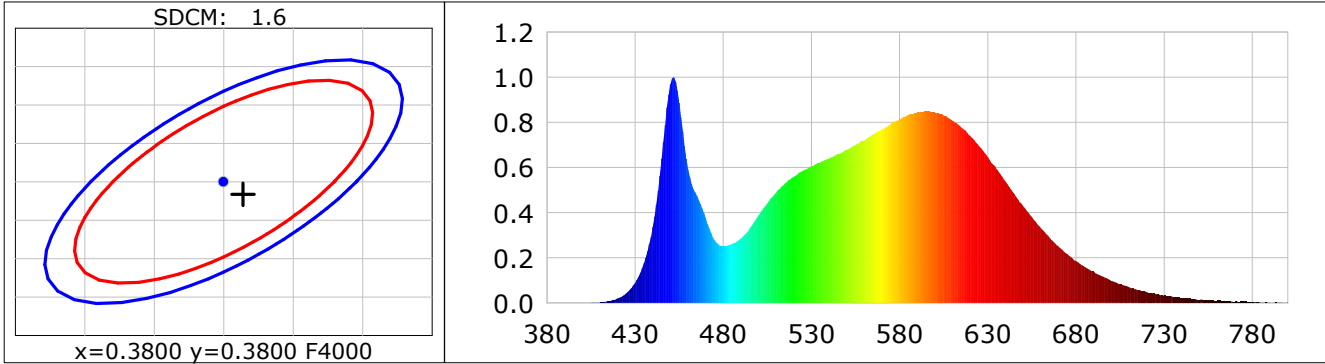
Lightsource Test Report

Product Infomation

Product Category: LED STRIP	Product Type: LED STRIP
Product Spec: BONE 6	Product Number: 404
Manufacturer: TECSOLELED S.L.	Buyer: TECSOLELED S.L.

CIE Colorimetric Parameters

Chromaticity coordinates: $x=0.3814$ $y=0.3784$ $u(u')=0.2251$ $v=0.3350$ $v'=0.5024$
 CCT: $T_c=3987K$ ($duv=0.00048$) Color Ratio: $R=0.184$ $G=0.780$ $B=0.036$
 Peak Wavelength: 451.7nm Half Bandwidth: 20.4nm
 Dominant Wavelength: 578.9nm Color Purity: 0.280
 CRI: $R_a=83.1$, $avgR(1\sim14)=76.4$, $avgR(1\sim15)=76.4$ TM30: $R_f=83$, $R_g=95$
 GAI: $GAI_BB_8=91.7$, $GAI_BB_15=98.9$, $GAI_EES=72.1$
 R1 =82 R2 =90 R3 =95 R4 =82 R5 =82 R6 =86 R7 =85 R8 =64
 R9 =9 R10=75 R11=81 R12=60 R13=84 R14=97 R15=76
 Color Quality Scale: $Q_a=82.6$, $Q_f=82.8$, $Q_p=82.4$, $Q_g=92.4$
 Q1 =82 Q2 =98 Q3 =79 Q4 =76 Q5 =81 Q6 =83 Q7 =85 Q8 =89
 Q9 =98 Q10=89 Q11=85 Q12=84 Q13=84 Q14=73 Q15=76



Photometric Parameters

Luminous Flux: 1514.7 lm Efficiency: 129.42 lm/W Radiant Power: 4.547 W
 Total mains efficacy: 119.84 lm/W Energy Efficiency Class: E (EU 2019/2015)

Electric Parameters

Voltage: 24.000V Current: 0.4877A Power: 11.70W
 Power Factor: 1.0000 Frequency: 0.00Hz

Test Infomation

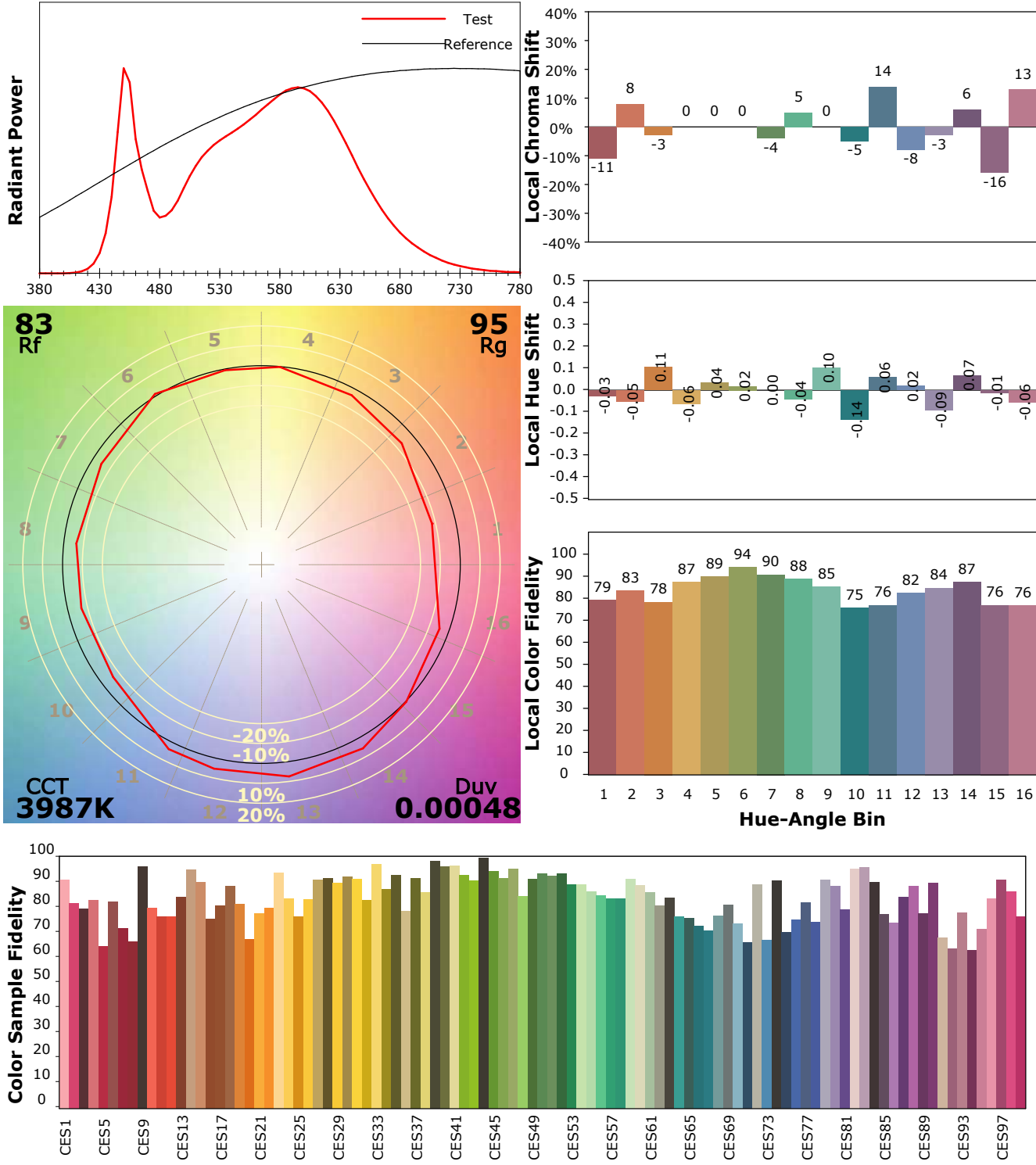
Scan Range: 380~800:1nm	Photometric Method: sphere-spectroradiometer
Stabilization Time: 0 Sec ALC.: 1.0000	Photometric Condition: Sphere diameter: 1.50m, 4PI
Max of Signal: 46712 (2117)	CCD Integration Time: 366.97 ms

IES TM-30-18 Color Rendition Report

Product Information

Product Category: LED STRIP
 Product Spec: BONE 6
 Manufacturer: TECSOLED S.L.

Product Type: LED STRIP
 Product Number: 404
 Buyer: TECSOLED S.L.



Condition: Tx:19.1°C, Ti:17.4°C, R.H.:60%
 Test Lab: TECSOLED S.L.
 Operator: JORDAN GIL DIAZ

Test Device: Inventfine CMS-2S (Plus)
 Test Time: 2021-11-08 17:03:31
 Inspector: